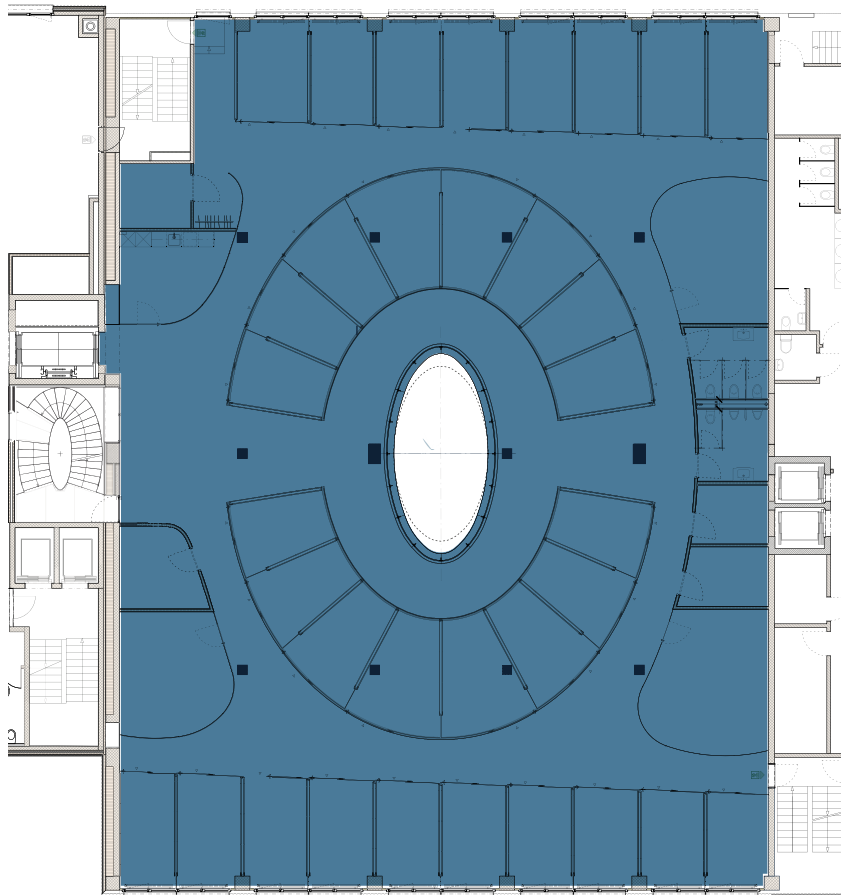




WESTGATE



## CENTRAL WING

2nd floor: 850 m<sup>2</sup>

Scale: 1:300



**Westgate**

Neuhofstrasse 1

6340 Baar

Switzerland

[westgate-baar.ch](http://westgate-baar.ch)

**Westgate Investments AG**

Roland Zemp

+ 41 44 218 78 00

[zemp@westgate.ch](mailto:zemp@westgate.ch)